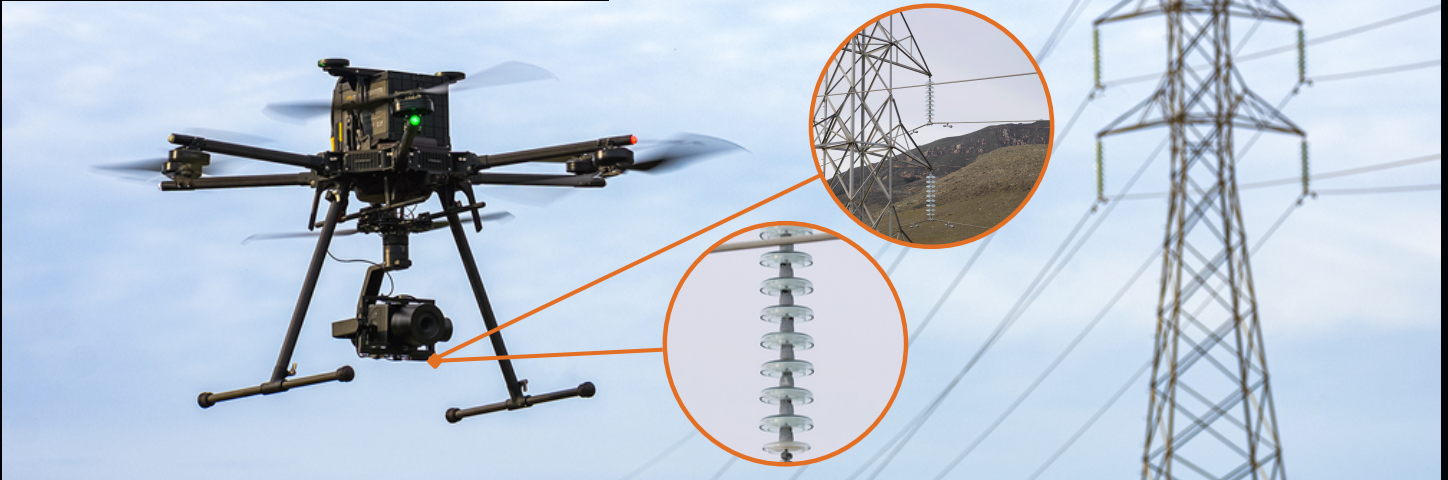


IF1200A
MADE IN THE USA 



FEATURED PAYLOADS

The IF1200A Has Fully Integrated Sensors for Inspection, Mapping, and LiDAR Applications



Workswell WIRIS Enterprise | Pixy WE



PhaseOne iXM-100 | Gremsy P3



Sony A7R | Gremsy T3



Sony RX1R | Gremsy S1

Performance

Max Ascent Speed	5 m/s	16.4 ft/s
Max Descent Speed	2.5 m/s	8.2 ft/s
Max Air Speed	25 m/s	56 mph
Max Wind Resistance	12 m/s, 15 m/s gusts	23 knot, 29 knot gusts
Max Tilt Angle	30°	
Max Angular Velocity	Tilt: 300°/s, Yaw: 45°/s	
Operating Temperature	-10°C ~ 40°C	14°F ~ 104°F
Operating Humidity	10%~95%	
Service Ceiling (with given payload)	3.9 km (12,800 ft) w/ 4 kg, 2.2 km (7,200 ft) w/ 8.7 kg	

Physical Features

Diagonal Size (propeller center to center)	1,025 mm	40.4 inches
Unfolded Size (flight ready, WxLxH)	165.5 x 154 x 76.5 cm	65.1 x 60.6 x 30.2 inches
Folded Size (stow, WxLxH)	47.5 x 49.5 x 47 cm	18.7 x 19.5 x 18.5 inches
Empty Weight (w/o batteries)	7.8 kg	17.2 lbs
Weight w/ Batteries	16.3 kg	35.9 lbs
Max Gross Takeoff Weight	25.0 kg	55.0 lbs
Max Payload Capacity	8.7 kg	19.1 lbs
Transport Case Size (WxLxH)	64.8 x 64.8 x 58.4 cm	25.5 x 25.5 x 23.0 inches
Transport Case Weight (w/ aircraft)	29.0 kg	64 lbs

Flight Stack

Flight Controller	CubePilot Cube Blue H7 Triple Redundant IMUs
GNSS / Compass	CubePilot Here3 M8P (2x)
Payload Power Rails	5v, 12v/15v, 18v, 44.4v (12s battery voltage)
Payload Interface	IFT Universal Payload Interface V2.1
Operating Software	Copter by Ardupilot

Flight Modes

Position Hold	Holds altitude and position, manual roll and pitch
Loiter	Holds altitude and position, precision manual movements using GPS
Auto	Executes pre-defined mission
RTL	Auto returns to takeoff location and lands
Land	Auto land while maintaining position
Altitude Hold	Holds altitude only, failsafe mode if GPS signal lost

1200A Flight Time @ Given Payload Weight

